



YOUR  
TRUSTED  
PARTNER  
IN STEEL  
SOLUTIONS

## About us

---



### OUR SPECIALTY

Metal frameworks and structures are at the heart of our production, from designing the most complex structures to the smallest architectural details.



### 75 YEARS OF ENGAGEMENT

Since 1948, the company has developed unique expertise in steel transformation solutions. The company has expanded its product range to adapt to the evolving needs of the market.



### GEOGRAPHICAL EXPANSION

In recent years, we have strategically focused its attention on West Africa and inaugurated BMI Engineering, the first steel plant in Guinea, ready to meet the needs of the region's thriving industries.



**We've known steel for 70 years...**

# Key to our success

---

## Human Resources

Over the years, integrity, motivation, and expertise have been passed down from one generation to the next at Parissis.



3

Quality Assurance  
& Control



8

Management  
& Administration



5

Project  
Management



25+

Installation



2

Health & Safety  
Regulation



8

Technical  
Expertise & Engineering



50+

Production

## Technological advancements

Our production relies on state-of-the-art machinery and custom software, ensuring complete control over time and quality.

- Dual-output plasma cutting heads
- Four assembly lines and tables per factory
- Fully automated welding machine
- Semi-automatic FCAW welding machines
- Column drill press
- Press brake machine 3.2 meters
- Shot blasting and painting room
- Bandsaw
- Manual welding machines
- Plate rolling machine capable of handling thicknesses up to 25 mm
- Shearing guillotine machine 3.2 meters





Our company is certified by ISO for organizational management and has received certificates of conformity according to EN1090 for the manufacture and assembly of steel structures.

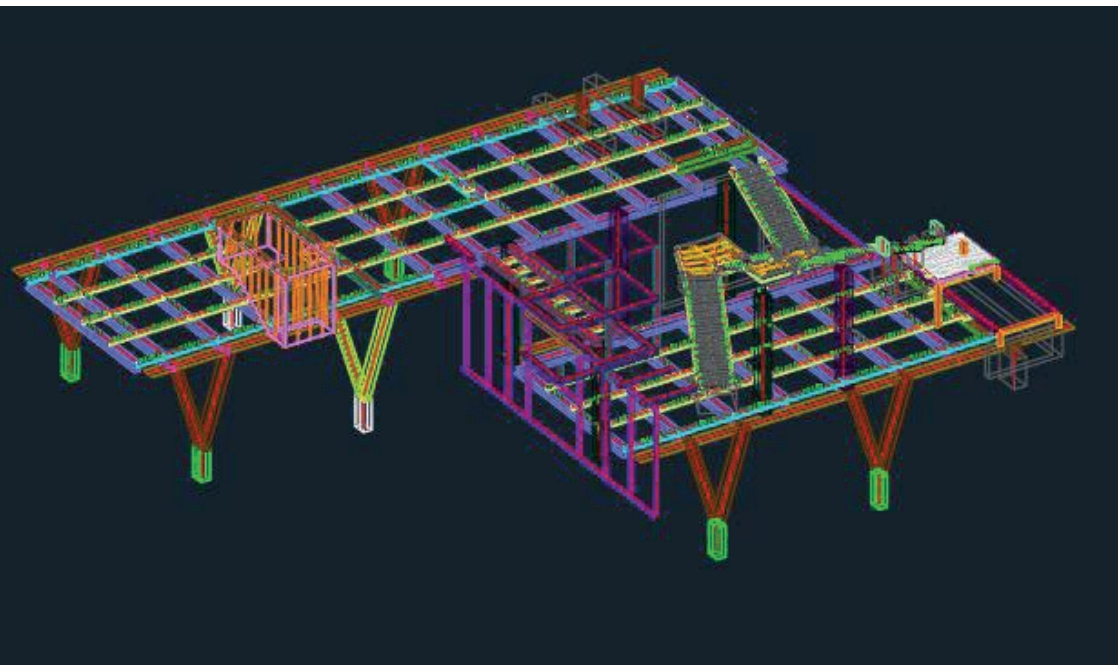
## Our services

---

### Conception et optimisation de structures métalliques

We provide our clients with technical and industrial expertise for **turnkey solutions** and extend our services to every stage of a project, ensuring

- **3D visualization** to assess all details in advance.
- **2D detailed** engineering with shop drawings, fabrication drawings, and assembly drawings.
- Use of **BIM technology** to facilitate coordination.



## Fabrication and installation

### Global Expertise Tailored to Your Needs

With over 70 years of experience, we operate on a global scale through a network of strategically located offices and factories.

Present on four continents, we combine compliance with international standards and local adaptability to deliver customized solutions perfectly aligned with our clients' expectations.



1 • **Certified and Tested Raw Materials**

2 • **State-of-the-Art Machinery and Experienced, Qualified Workforce** – Capacity of 3,000 tons per year

3 • **Full-Scale Mockup**

4 • **Treatment and Painting According to ISO 12944** – Packaged and loaded into containers

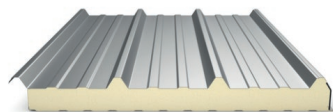
# Products

---

## Sandwich Panels

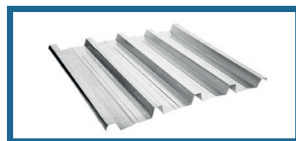
Our Sandwich Panels are manufactured on a production line using continuous foam pouring process between the steel sheet linings. This state of the art new production line located in Guinea utilizes high-pressure foam mixing technology and can produce up to 2500 m<sup>2</sup> of sandwich panel per day. The Polyurethane (PUR) foam provides high thermal and noise solution with excellent structural properties and fire safety.

The panels are designed for use as wall and roof, interior or exterior wall cladding of industrial, agricultural, storage and public building facilities. They are also used as insulation in the food and refrigeration industries as components for cold rooms and freezer. Our panels reduce the maintenance costs of a building, such as heating, cooling and air conditioning and the constant release of CO<sub>2</sub> into the atmosphere.



## Corrugated Sheet Panels

Economical Corrugated sheets for normal and high Load capacity. This profile is suitable for any type of roofing and cladding.



## Secondary Framing & Purlins

Available in different size and depth, C or Z purlins are ideal to provide long spans between consecutive portal frames to support any type of roof and wall Sandwich Panels. Purlins can be supplied either plain or punctured as per clients or project requirements.



## Overhead Cranes

In partnership with worldwide suppliers, we provide double girder and single girder overhead cranes, that come in different capacities and spans, for handling material movements in warehouses and stockyards.



## Prefabricated Houses

We provide customized and standard prefabricated houses, that have different uses such as: Staff accommodations, site offices, Temporary hospital, Schools, etc..





# Applications and selected industrial projects

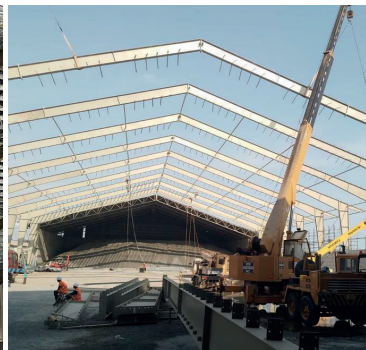
## Processing plants

### Cemenco Hangar

**Client:**  
**Sigma Group**

Design, supply, fabrication, transport and erection supervision of a 4500 m<sup>2</sup> structural steel hangar.

**Location:**  
**Monrovia Liberia**



## Tunnels

### Msailha Dam Steel Arches

**Client:**  
**Batco**

Supply and fabrication of steel arches for a tunnel for Msailha Dam in north Lebanon.

**Location:**  
**Lebanon**



## Storage and maintenance facilities

### Unifil's Headquarters

**Client:**  
**Unifil**

Conception, fourniture et montage d'un hangar en acier avec mezzanines pour la maintenance des véhicules lourds au siège de l'unifil.

**Location:**  
**Lebanon**



## Workshops with overhead cranes

### Overhead Cranes

**Client:**  
**Matelec**

Supply and erection of twenty five overhead cranes - single griders and double griders - with capacities ranging from 3.2 tons till 20 tons, and spans ranging from 6.0 meters to 25 meters.

**Location:**  
**Cherfine Lebanon**



## Conveyors, bridges, chimneys, etc...

### Sibline Cement Plant - KOCH Consultants

**Client:**  
**Ciment De Sibline**

Supply and erection of 500 tons of steel structures, steel buildings, footbridges, steel frames, chimneys, silos, conveyors, tanks, gas flues...

**Location:**  
**Lebanon**



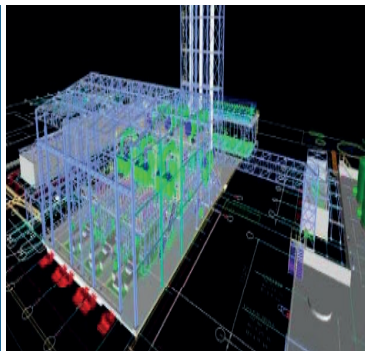
## Power plants

### Power Plant

**Client:**  
**Governmental**

Design, fabrication, fire rating paint, and supervision of around 500 tons of steel, 1400 m2 of gratings, ladders, stairs, 2 hours fire rated and 35 db acoustical panels.

**Location:**  
**Kossodo Burkina Faso**





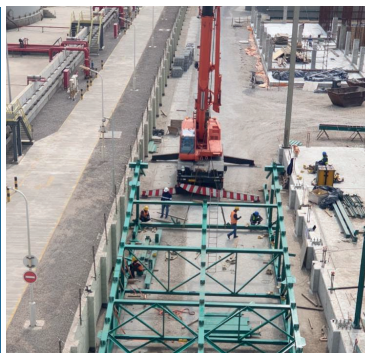
## Power plants

### Power plant

**Client:**  
**Governmental**

Design, fabrication, fire rating paint, and supervision of around 500 tons of steel, 1400 m<sup>2</sup> of gratings, ladders, stairs, 2 hours fire rated and 35 db acoustical panels.

**Location:**  
**Namibia**



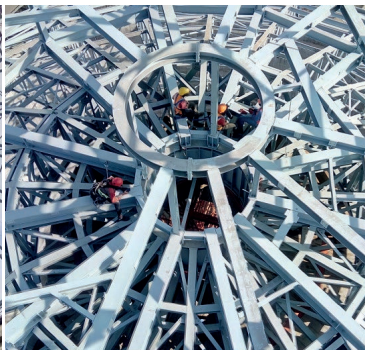
## Clinker Silos

### Clinker Silo

**Client:**  
**Socimat Ivory Coast**

Supply, fabrication, painting and supervision of a 48 meters diameter clinker silo cover with an upper penthouse to receive conveyors plus 50 meters long safety stairs.

**Location:**  
**Abidjan**



## Workers accommodation and offices

### Prefabricated Units

**Client:**  
**Divers**

Turnkey solution for prefabricated houses ranging from 12 to 25 m<sup>2</sup>, made of carbon steel or lightweight structure, covered with 50 mm thick sandwich panels, and including doors, windows, kitchen, bathroom, and air conditioning.

**Location:**  
**Guinea**



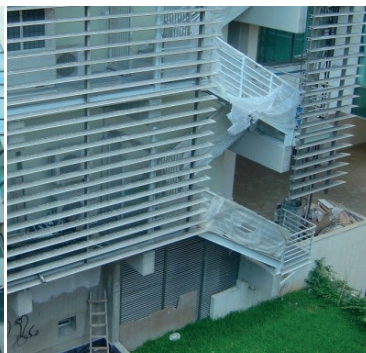
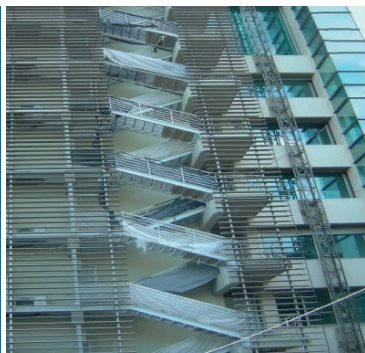
## Fire escape stairs

### Fire Escape Steel Stairs

**Client:**  
**Minitrade SAL**

Supply, fabrication, and erection of 45 tons of steel structure for fire escape steel stairs - platforms made of hot dip galvanized gratings with metallic doors.

**Location:**  
**Lebanon**



## Structural steel for processing plants

### Processing Plant - Café Najjar

**Client:**  
**Ste Ets Michel Najjar - Café**

Supply and erection of 60 tons of steel structures for nuts processing machinery.

**Location:**  
**Lebanon**



## Tanks

### Fuel Storage Tanks

**Client:**  
**TOTAL ENERGIES**

Supply, manufacturing, sandblasting, and painting of 6 fuel storage tanks.  
• Two (2) with a capacity of 100,000 liters and a diameter of 3 m - Length 15 m.  
• Four (4) with a capacity of 50,000 liters and a diameter of 3 m - Length 7 m.

**Location:**  
**Conakry - Guinea**





## Reservoir pipelines

### Reservoir Pipeline

**Client:**  
**Coral Oil**

Supply, fabrication and installation of a 12" sea line, with its cathodic protection - total length 1200 linear meters.

**Location:**  
**Lebanon**



## Sewage water tanks

### Sewage water tanks

**Client:**  
**Water & Power Engineering (Wpe)**

Supply and fabrication of eleven rectangular shaped tanks 12.0 m long, for waste water treatment plant.

**Location:**  
**Pakistan**



## Composite steel structures

### Lebanese University

**Client:**  
**C-D-R**

Erection of structural steel composite columns, made from large diameter seamless steel pipes, along with high grade steel plates.

**Location:**  
**Lebanon**



## Steel cofferdam

### Cofferdam

**Client:**  
**Mar Contracting**

Supply, fabrication and full mock-up of one cofferdam for a desalination plant.

**Location:**  
**Djibouti**



## Telecommunication towers

### Government Relay Antenna

**Client:**  
**Batco**

Supply, fabrication and erection of 90 tons self supporting tower, 72 meters high - 18 x 18 meters base.

**Location:**  
**Lebanon**



## Custom steel buildings

### Retractable Roof

**Client:**  
**Rami Cheibane**

Design, study, manufacturing, and installation of a restaurant covering, including a structure with a motorized retractable roof, covered with 100 mm thick sandwich panels.

**Location:**  
**Abidjan, Ivory Coast**





## Contact us

### LEBANON

Parissis Building, Rue Armenie,  
Bourj Hammoud Beirut

☎ +961 1 260 125 / 6

### IVORY COAST

Canal Street, Zone 4C  
Abidjan

☎ +225 07 01 972 277

### CYPRUS

Athalassas Avenue 169, 2024,  
Strovolos, Nicosia

☎ +357 97 614 283

### GUINEA

BMI Holding S. A / BMI Engineering  
BP 3152 Bellevue, Conakry

☎ +224 611 815 427

[parissis@parissis.com](mailto:parissis@parissis.com)

[www.parissis.com](http://www.parissis.com)