



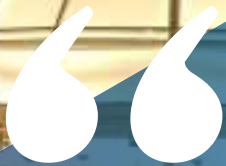
**PARISSIS**  
STEEL ENGINEERING  
& CONTRACTING COMPANY  
**SINCE 1948**

**SINCE 1948**  
**PARISSIS**

**STEEL ENGINEERING  
& CONTRACTING COMPANY**

---

A Leading Steel Construction Company Based In Lebanon, Working On Both Local And Regional Projects.



**Your preferred steel partner.**

We provide you with quality construction, on-time delivery, and reliable services.







# About Us

The world’s built environment is changing...  
From **contemporary architecture** to more **efficient structures**, Parissis is pioneering the revolution of the traditional construction industry.

Our mission, as your **preferred steel partner**, is to reproduce any concept you envision with your mind’s eyes while keeping you worry-free.

Our insistence on **responsiveness and professionalism** has led to our success, and we have earned a reputation for providing **superior steel solutions** that exceed clients’ expectations.

We take pride in the **quality of our services**, and are internationally recognized for our ability to deliver **total full works packages**, specializing in **highly engineered steel structures** and **industrial steel works**.

In the past 15 years alone...

 **225+**  
Projects

 **10+**  
Countries

 **20,000+**  
Tons of steel installed



## OUR SPECIALTY

**Structural steel and metal works** are at the core of all our production fields. We deliver a **wide range of products** and proficient services, with guaranteed efficiency and long-term customer satisfaction.



## 70 YEARS OF COMMITMENT

Since 1948, Parissis has developed a **unique expertise** in steel processing solutions. The company has expanded its products to adapt to evolving market needs, and has grown to work on both local and regional **high profile projects**.



## A CLIENT CENTRIC COMPANY

Parissis is associated with **quality works, timely delivery, and reliability**. We emphasize our position as **your partner**, as we give personal attention to each client, and are proactive in finding solutions that will best achieve your goals.





# Table Of Contents



## OVER THE YEARS

Where we come from, where we're headed



## PRODUCTS & SERVICES

A wide range of high quality solutions



## KEY TO OUR SUCCESS

Our people, our values, our technical resources



## EXCLUSIVE REPRESENTATION

Strategic partnerships to ensure your needs



## WHY WE'RE DIFFERENT

What our customers say about us



## PROJECTS

Our most representative landmark projects



## CLIENTS

Some of our most important clients



## We've known steel for 70 years...

Since 1948, Parissis has adapted to an evolving environment while remaining progressive in its field.



# Over The Years

## Rising to meet the challenges...

During its 70 years of commitment, Parissis has continued to match market growth, evolving from a Lebanese ship repair workshop to a **reputed leader in modern engineering and steel construction.**



Company creation and inception in Baghdad, Aleppo & Damascus

MM. Anastassi & Apostoli Parissis

Structural and mechanical maintenance of commercial ships

Construction of general steel structures such as hangars and warehouses

Production and installation of industrial steel works such as tanks and steam boilers



Company takeover and diversification

MM. Michel, Pari, & Vassili Lampsos

Construction of highly engineered steel structures such as communication and distribution towers & bridges

Construction of architectural composite structures such as glazed skylights and facades



New management structure and diversification

MM. Michel & Vassili Lampsos

Construction of new architectural composite structures such as tensile fabric membranes

Construction of structural composite concrete elements such as concrete filled steel tubes

## .. of a future with bright possibilities.

Today, as new developments transform the construction industry, Parissis is best positioned to become your **partner** in shaping the **cities of the future.**

We aim to further expand while maintaining our **commitment to quality** and staying **on top of emerging trends.**



### INCREASED PRODUCTIVITY

- Fast construction due to steel versatility
- High efficiency due to high density of steel
- Modular construction practices: Off-site quality production, quick on- site erection



### LONG-TERM SUSTAINABILITY

- Recyclability of steel without alteration of quality
- High steel durability and versatility
- Internal best practices: Abidance by environmental policies and promotion of renewable energies



### CONTEMPORARY ARCHITECTURE

- Innovative design due to steel ductility
- Unlimited possibilities through combination of steel with other materials
- Creation of acclaimed landmarks: Exceptional execution and diversified partnerships





## GENERAL STEEL STRUCTURES

Since its inception, Parissis has been a pioneer of structural steel works, whether fundamental or highly engineered, maximising the potential of steel construction and leveraging our unique experience in the market.

Our clients range from **private** individuals and companies in different sectors to **governmental** institutions.

- Industrial plants and factories
- Warehouses, mezzanines and hangars
- Fire escape stairs
- Walls and buildings' consolidation structures
- Electrical and communication towers
- Special shaped steel poles (circular, hexagonal, octagonal)
- Steel substructure supporting PV panels

## Products And Services

Through 70 years of cultivated experience, our world-class manufacturing workforce and machinery have allowed us to serve a **growing list of clients in various sectors**.

We provide our customers with technical and manufacturing expertise for **long-term turnkey solutions**, and extend our services to every stage of a project:

- Handing Over
- Erection
- Treatment and Paint
- Fabrication
- Shop Drawings
- Design

We address **thermal and seismic** requirements, exceeding expectations for performance, life cycle and safety, and always complying with **international standards**.



**Building the future upon existing history...**

We seize every new job as a challenge and learning experience.







Diversified solutions,  
**Unvarying quality.**



### ARCHITECTURAL STRUCTURES

Parissis distinguishes itself from its competitors by its unique expertise, technological resources and partnerships, to shape the most iconic projects with highly complex steel and composite building skins.

We have been serving several **high-profile clients** from **various industries**, including shopping centers, hotels, sports courts and facilities, private villas, car parks, etc...

- **Steel** structures
  - Steel bridges
  - Steel façade
  - Entrance canopies
  - Panoramic lifts
- **Glazed** structures composed of steel and glass
  - Glazed bridges
  - Glazed skylights of different shapes (pyramidal, domed, barrel)
  - Glazed facades
  - Glazed entrance canopies
- **Tensile membrane** structures composed of steel and the highest quality skin covers
  - Shade fabric membrane canopies
  - Architectural umbrellas
  - Tailor made roof covers



### SPECIAL INDUSTRIAL INFRASTRUCTURE

Since its inception, Parissis has been a leader in the supply, installation, refurbishment, and maintenance of industrial infrastructure for special uses in different industries.

We have successfully developed solutions for a wide scope of **industrial** clients, mainly **food processing factories**, **chemical factories**, **water treatment facilities**, and **oil and gas facilities** and **cement factories**.

- Overhead cranes
- Screw and belt type conveyor systems
- Industrial chimneys made of corten and special steel
- Steel and stainless steel light storage tanks (domestic oil and water reservoirs, open-top waste-water tanks, etc ) and silos with associated piping
- Heavy fuel and oil tanks with associated piping, pump houses, fire fighting
- Sea lines for tanks with associated off-loading connections systems
- Steam boilers with associated heat exchangers and dryers
- Distillers and crystallizers





## STRUCTURAL COMPOSITE CONCRETE ELEMENTS

Composite structures are key to the new building industry. By combining the advantages of steel and concrete, Parissis is able to solve many design, architectural, economical, and functionality problems that can arise in complex projects. We ensure **faster construction of stronger, lighter, and more compact buildings**.

Parissis has served various clients with these innovative practices on different types of projects such as mega-factories, universities, and hi-rise commercial buildings.

- Concrete Filled steel Tubes (CFT):

In this system, the steel serves as a permanent formwork for the concrete column and slabs are also made of steel to reinforce the connection between members. This leads to a **stronger and more advantageous system** when compared to regular reinforced concrete structures.

- Encased Composite Concrete (ECC):

In this system, the steel sections are encased in concrete columns. This system provides **excellent seismic and wind load performances** as well as better fire protection plans than regular structures.



We change the traditional view  
of the construction industry



## HIGH-END DECORATIVE METAL WORKS

Along with our partners, our expertise has allowed us to prosper in **quality metal products**; focusing on sophisticated **interior decorative steel works** with complex designs and high end finishes.

Applications are various and our clients range from residential **private villas** to commercial **shopping malls and restaurants**.

- Stainless steel decorative works
- Copper and brass handrails for balustrades
- Internal and helicoid stairs
- Glazed mezzanines for villas







# Key To Our Success

## Human Resources


For the past 70 years, **integrity, motivation, and expertise** have been transferred from a mature generation to a younger one at Parissis, resulting in a **growing enthusiastic workforce**, eager to exceed our clients’ expectations.



**3**  
Quality Assurance  
& Control




**8**  
Management  
& Administration




**5**  
Project  
Management



**25+**  
Installation



**2**  
Health & Safety  
Regulation



**8**  
Technical  
Expertise & Engineering



**50+**  
Production

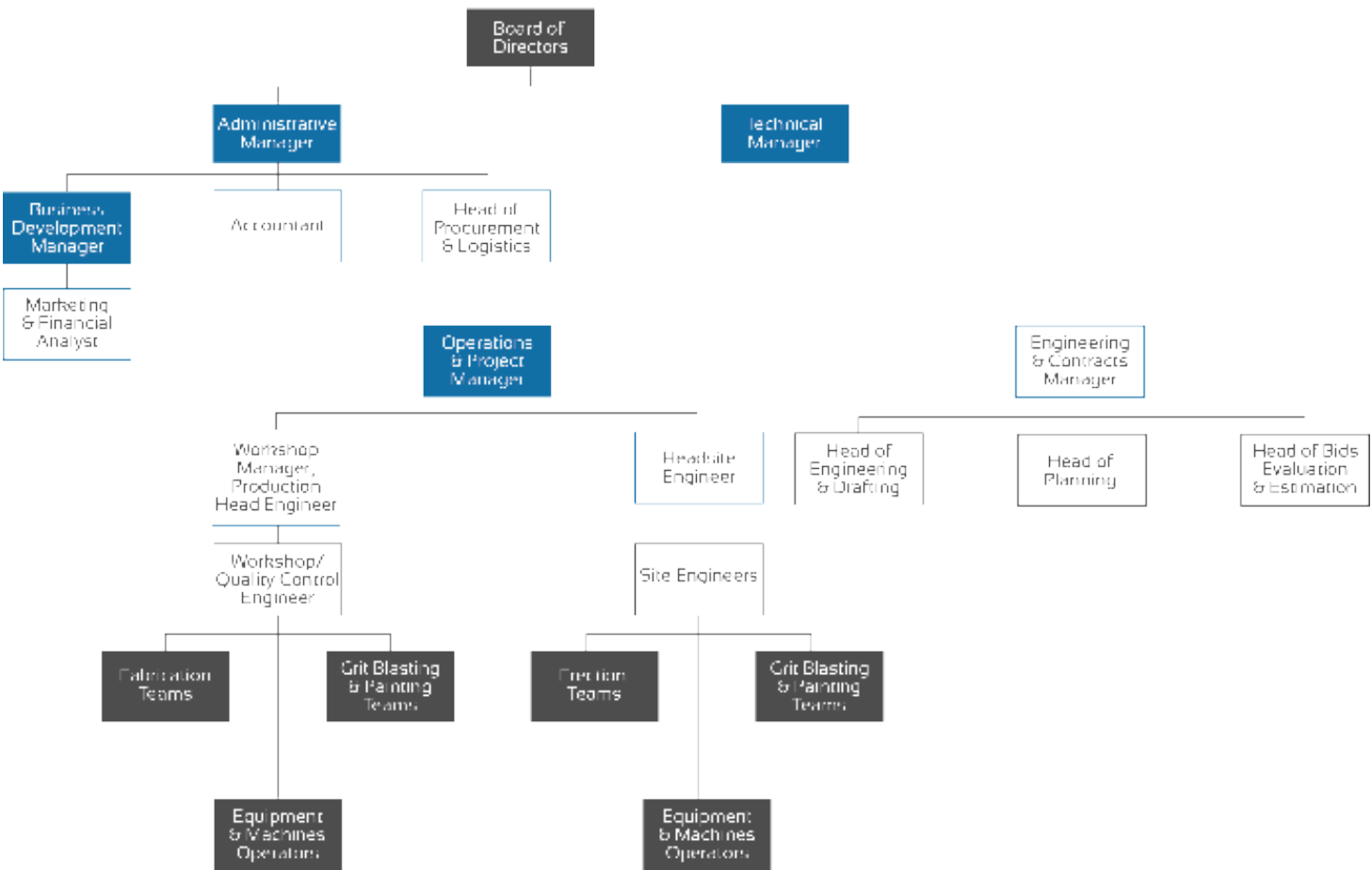
## Governing Bodies

Michel Lampsos	Vassili Lampsos	Anesti Lampsos	Melina Lampsos
Technical Manager	Administrative Manager	Operations Manager	Business Development Manager
Mechanical Engineering	Business Administration	Computer and Telecommunication Engineering	Civil Engineering and Entrepreneurial Management

## Organization

Our professionalism comes from **communication and teamwork** between the complementary managers and a dynamic experienced team of structural engineers.

Our quality works come from the **perseverance** of our technicians and workshop personnel who are certified and highly **qualified** in the fabrication and welding of structural steel works.





Our Values



AMBITION



TEAMWORK



INNOVATION



TRUST



EXCELLENCE

Technological and Industrial Resources

Parissis stays aware of modern technologies, and embraces the latest Autocad and **Building Information Modeling (BIM)** softwares, along with lean construction methods to improve efficiency and enhance client value.

Our in-house production capabilities come from our established progressive factory equipped with our state of the art **machineries** that keep us in full control of time and quality.



# Why We're Different



**WE'RE ON TIME AND ON BUDGET.**

We hit our deadlines and continuously search for the most economical solutions.



**WE'RE RELIABLE AND CONSISTENT.**

Our clients are our partners. We like to keep them informed and satisfied.



**WE'RE EXPERTS IN PROJECT EXECUTION.**

We're masters of our craft, and can solve any problem arising from complexity.



**WE MAKE COMPLEX SEEM EASY.**

We engage to build our clients' dreams while making their experience seamless.



**WE ENSURE QUALITY AND SAFETY.**

Our expertise allows for early recognition and limitation of any possible risks.



**WE GO THE EXTRA MILE.**

We are always willing to look beyond our scope boundaries to satisfy our clients.





# MakMax

## Taiyo Membrane Corporation Australia

The MakMax Group of companies is the world's leading tensile architecture contractor boasting more than 90 years of experience.



## Exclusive Representation

Through partnerships or timely alliances, Parissis collaborates with different players in the industry to fulfill your every need.

More specifically, we exclusively represent **leading international corporations** to offer you the **best solutions in the region**, combining any materials and answering any engineering requirements.



Trust is one of the things we build well.

With our partners as with our clients, we work better together to develop the most remarkable solutions on the market.



FABRIC MEMBRANE STRUCTURES  
(PVC,PTFE,ETFE)



ARCHITECTURAL UMBRELLAS  
AND TENTS



MEMBRANE INNOVATIVE SOLUTIONS



MODULAR SYSTEMS



MEMBRANE INNOVATIVE SOLUTIONS



PARKING COVER SYSTEMS



## Elastron Greece

With over 50 years of activity in the steel industry, Elastron has established an important presence in Greece and internationally.



## Core Greece

With over 50 years of activity in the steel industry, Core has established an important presence in Greece and internationally.



STEEL PROFILES, PLATES,  
BEAMS, ETC...



TURBULARS: CHS, SHS,  
AND RHS



ARCHITECTURAL CLADDING SYSTEM



THERMO INSULATING ROOF AND  
WALL PANELS



STEEL SERVICES: CLADDING  
MATERIALS, COMPOSITE METAL DECKS, ETC...



COLD FORMED SECTIONS: A AND C PUR-  
LINS, SIGMA SECTIONS, GUTTERS, ETC...



COLD ROOMS AND CLEAN ROOMS  
PANELS



PRE-FINISHED METAL INSULATING  
PANELS FOR CONTROLLED  
ENVIRONMENT ROOMS



NATURAL LIGHTING SYSTEMS



# Projects

## LUNC University

Erection of structural steel composite columns, made from large diameter seamless steel pipes, along with high grade steel plates.



**LOCATION**  
Lebanon - Tripoli

**COMPLETION**  
2017

**BUSINESS AREA**  
Composite structures

**CLIENT**  
Council of Development and  
Reconstruction

**ARCHITECT**  
Laceco

**CONSULTANT**  
Laceco

**MAIN CONTRACTOR**  
JV. Maalouf Trading & Cont. &  
Binaa W Imar





# ABC Verdun

Design, supply and installation of special steel roofs consisting of four steel elliptical shaped canopies; the smaller one (960m<sup>2</sup>) topped with concrete and the other three totaling 4660 m<sup>2</sup> covered with glass.



**LOCATION**  
Lebanon - Verdun

**COMPLETION**  
2017

**BUSINESS AREA**  
Double curvature skylights

**CLIENT**  
Verdun Mall

**ARCHITECT**  
Callison

**CONSULTANT**  
Khatib & Alami

**MAIN CONTRACTOR**  
MAN Enterprises





# ABC Ashrafieh

Supply and erection of 850 tons of architectural steel structures supporting aluminum kalzip roofing, glass canopies, glazed domes and tensile fabric membranes.



**LOCATION**  
Lebanon - Ashrafieh

**COMPLETION**  
2003

**BUSINESS AREA**  
Skylights and domes

**CLIENT**  
ABC sal

**ARCHITECT**  
BDP UK

**CONSULTANT**  
Rafic el Khoury

**CONSTRUCTION MANAGER**  
Mouawad-Edde





# InterContinental Hotel Glass Bridge

Design, supply, fabrication, transport to KSA and erection of a 23 meters length, complete glazed pedestrian steel bridge, at the Intercontinental hotel, Al Khobar - KSA, linking the main building to its newly constructed annex.



**LOCATION**  
KSA - Khobar

**COMPLETION**  
2017

**BUSINESS AREA**  
Glass bridge

**CLIENT**  
Intercontinental Hotel

**ARCHITECT**  
SKP

**CONSULTANT**  
SKP

**MAIN CONTRACTOR**  
Glassline Industries





# Aishti

Erection of steel structures covering the roof skylight and the four facades of the shopping mall, along with the installation of 1200 units of aluminum decorative panels.



**LOCATION**  
Lebanon - Jal El Dib

**COMPLETION**  
2016

**BUSINESS AREA**  
Structural steel façade and interior decorative works

**CLIENT**  
Aishti SAL

**ARCHITECT**  
David Adjaye

**CONSULTANT**  
David Adjaye

**MAIN CONTRACTOR**  
Parissis





# Unifil's Headquarters

Design, supply and erection of a steel hangar with mezzanines for maintenance of heavy vehicles at Unifil's headquarters.



**LOCATION**  
Lebanon - Naqoura

**COMPLETION**  
2009

**BUSINESS AREA**  
Turn key heavy hangar

**CLIENT**  
Unifil

**ARCHITECT**  
Unifil

**CONSULTANT**  
Unifil Engineers

**MAIN CONTRACTOR**  
Parissis





# Saida Stadium

Design, supply and erection of a cantilever steel structure, supporting a PVC membrane, along with the supply and installation of 4,500 m<sup>2</sup> of tensile fabric membrane.



**LOCATION**  
Lebanon - Saida

**COMPLETION**  
2001

**BUSINESS AREA**  
Cantilever tensile membrane structure

**CLIENT**  
Council of Development and Reconstruction

**ARCHITECT**  
Laceco

**CONSULTANT**  
Laceco

**MAIN CONTRACTOR**  
Parissis





# 4 Seasons Hotel

Supply and erection of steel structures, mechanical floors, fire escape stairs, roof sail, mezzanines, handrails and canopies.



**LOCATION**  
Lebanon - Beirut Central District

**COMPLETION**  
2009

**BUSINESS AREA**  
Architectural glazed structure

**CLIENT**  
Kingdom

**ARCHITECT**  
Dar El Handassah

**CONSULTANT**  
Dar El Handassah

**MAIN CONTRACTOR**  
M.A.K (M. A. Kharafi & Sons)





# Raidy Printing Press

Supply, fabrication, painting and erection of 1600 m<sup>2</sup> of steel structure, topped with 100 mm thick sandwich panel supporting Photovoltaic panels.



**LOCATION**  
Lebanon - Baabda

**COMPLETION**  
2018

**BUSINESS AREA**  
General steel structure

**CLIENT**  
Ecosys - HOLCOM

**ARCHITECT**  
Parissis

**CONSULTANT**  
N/A

**MAIN CONTRACTOR**  
Ecosys - HOLCOM





# Lebanese University Hadath

Supply, fabrication and erection of 1250 tons of steel structures for building's roofs, metallic stairs. Steel entrance canopies, steel bridges, steel walkways, diving boards...



**LOCATION**  
Lebanon Hadath

**COMPLETION**  
2003

**CLIENT**  
Council Of Development and  
Reconstruction (CDR)

**ARCHITECT**  
Laceco

**CONSULTANT**  
Laceco

**MAIN CONTRACTOR**  
Zublin A.G.





# Le Mall Byblos

Supply, fabrication and erection of 3 structural floors totaling around 3100 square meters,  
And the supply and installation of three 23 meters cantilever glass and PTFE membrane canopies.



**LOCATION**  
Byblos

**COMPLETION**  
2017-2019

**CLIENT**  
Hawat Investment

**ARCHITECT**  
A-Consult

**CONSULTANT**  
ERGA

**MAIN CONTRACTOR**  
SEC





# Alba University

Supply, fabrication and erection of one Atrium Canopy comprising of 20 meters trusses and a stainless steel cable green wall. And the Supply and installation of one Walkway glass canopy.



**LOCATION**  
Dekwaneh

**COMPLETION**  
2016-2017

**CLIENT**  
ALBA

**ARCHITECT**  
A.A.A

**CONSULTANT**  
ENG

**MAIN CONTRACTOR**  
Parissis





# Algorithm

Supply and erection of "KALZIP" standing seam profile for the new Algorithm headquarters for the roof and façade.



**LOCATION**  
Zekrit

**COMPLETION**  
2018

**CLIENT**  
Betabat

**ARCHITECT**  
SKP

**CONSULTANT**  
SKP

**MAIN CONTRACTOR**  
Betabat





# Cement Plant - Sibline

Supply and erection of 500 tons of steel structures, steel buildings, footbridges, steel frames, chimneys, silos, conveyors, tanks, gas flues...



**LOCATION**  
Sibline - Lebanon

**COMPLETION**  
2002-2004

**CLIENT**  
Ciment De Sibline

**ARCHITECT**  
N/A

**CONSULTANT**  
Koch - Germany

**MAIN CONTRACTOR**  
Parissis





# La Farge Abidjan

48 mtrs diameter cover for a clinker silo including a penthouse structure and a 45 mtrs height stair.



**LOCATION**  
Abidjan

**COMPLETION**  
2020

**CLIENT**  
La farge

**ARCHITECT**  
N/A

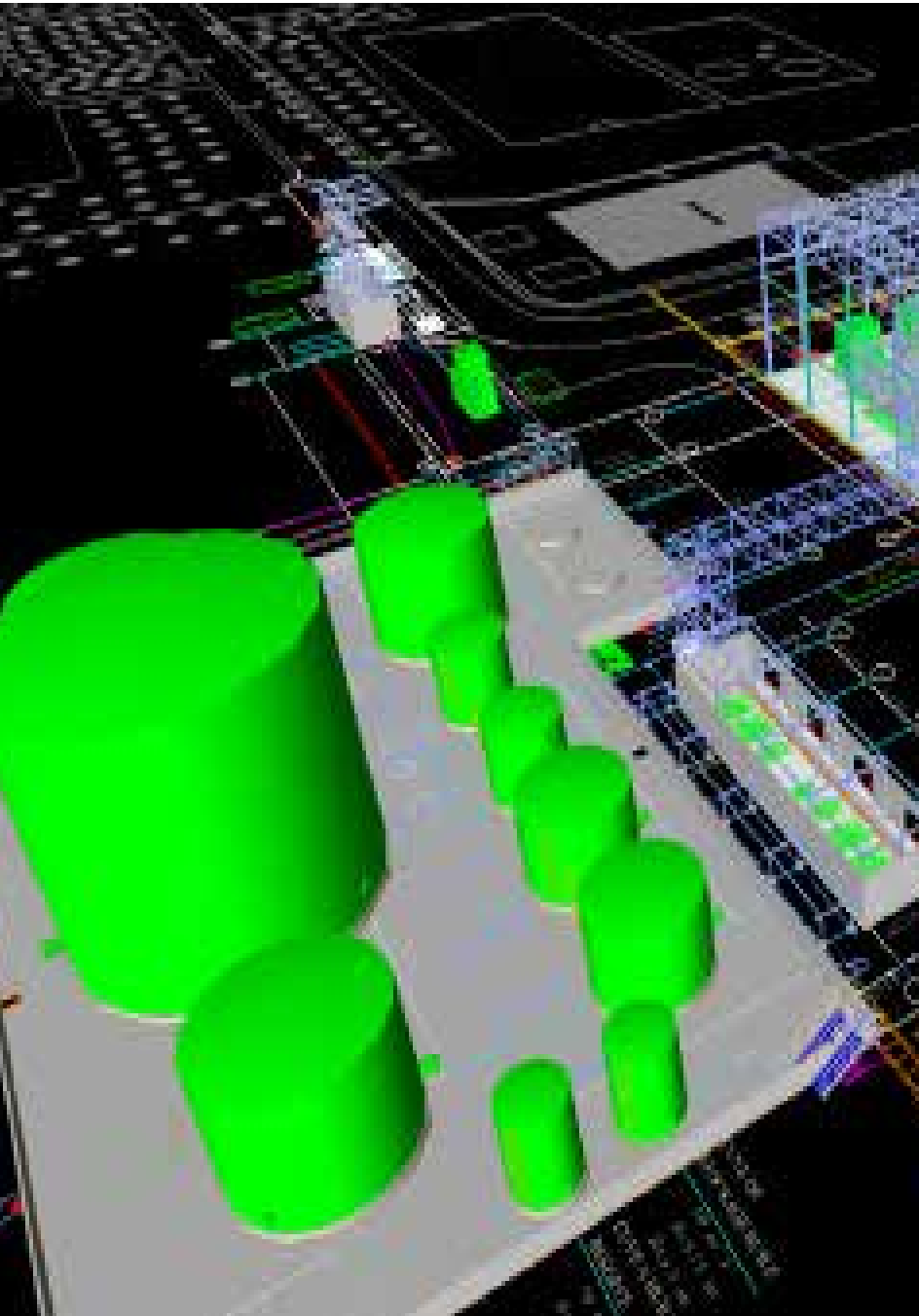
**MAIN CONTRACTOR**  
Parissis





# Kossodo Power Plant

Kossodo Power Plant , Scope of work included Design , Fabrication , Fire rating Paint, and supervision of around 500Tons of steel, 1400 m2of Gratings, Ladders, Stairs, 2hours fire rated and 35 DB acoustical panels.

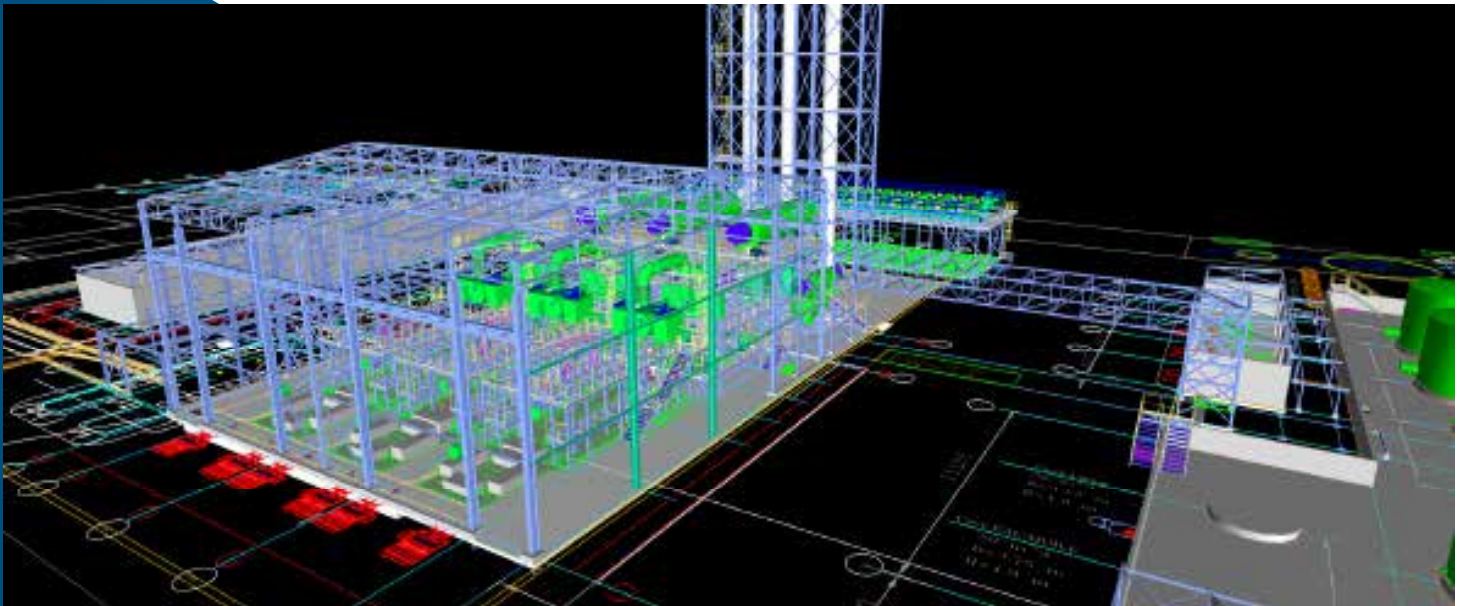
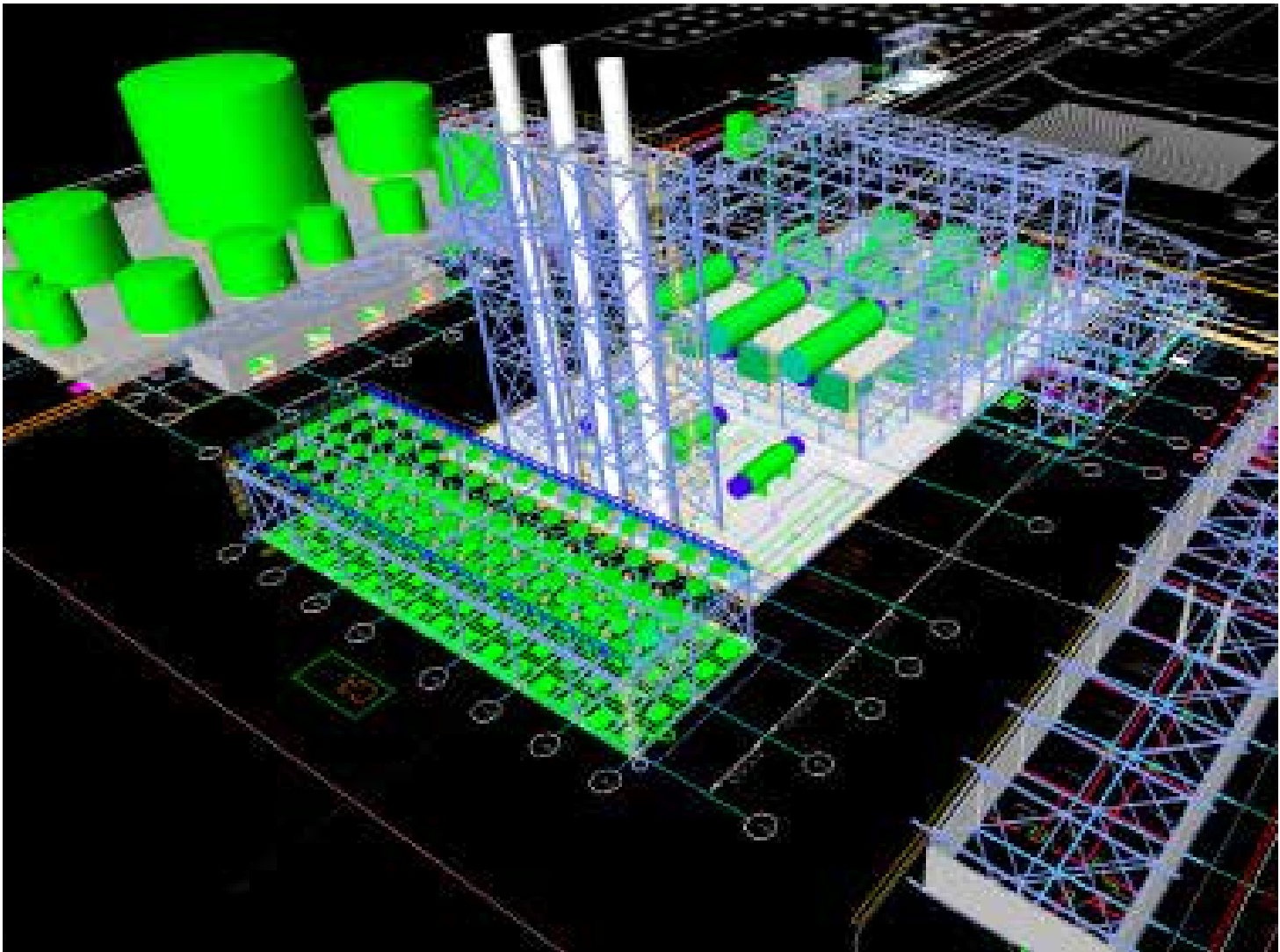


**LOCATION**  
Bukrina Fasso

**COMPLETION**  
Under construction

**Client**  
N/A

**Architect**  
N/A






# Clients



# Contact Us

-  Parissis Building, Armenia Street  
Bourj Hammoud - Beirut - Lebanon
-  +961 1 260 125 / 6  
Fax: +961 1 260 127
-  parissis@parissis.com
-  www.parissis.com